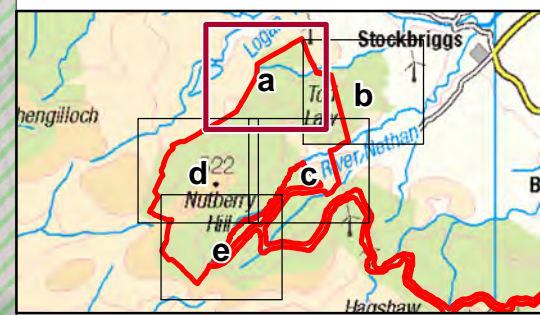


**KEY**

- Site Boundary
- Turbine
- Infrastructure
- Study Area

**Phase 1 Description (Code)**

- Broad-Leaved Semi-Natural Woodland (A1.1.1)
- Broad-Leaved Plantation Woodland (A1.1.2)
- Coniferous Plantation Woodland (A1.2.2)
- Unimproved Acid Grassland (B1.1)
- Semi-Improved Acid Grassland (B1.2)
- Improved Grassland (B4)
- Marsh/Marshy Grassland (B5)
- Continuous Bracken (C1.1)
- Acid Dry Dwarf Shrub Heath (D1.1)
- Blanket Bog (E1.6.1)
- Wet Modified Bog (E1.7)
- Acid Neutral Flush (E2.1)
- Bare Ground (J4)



Scale 1:7,500 @ A3



Cumberhead West Wind Farm  
Environmental Impact Assessment Report

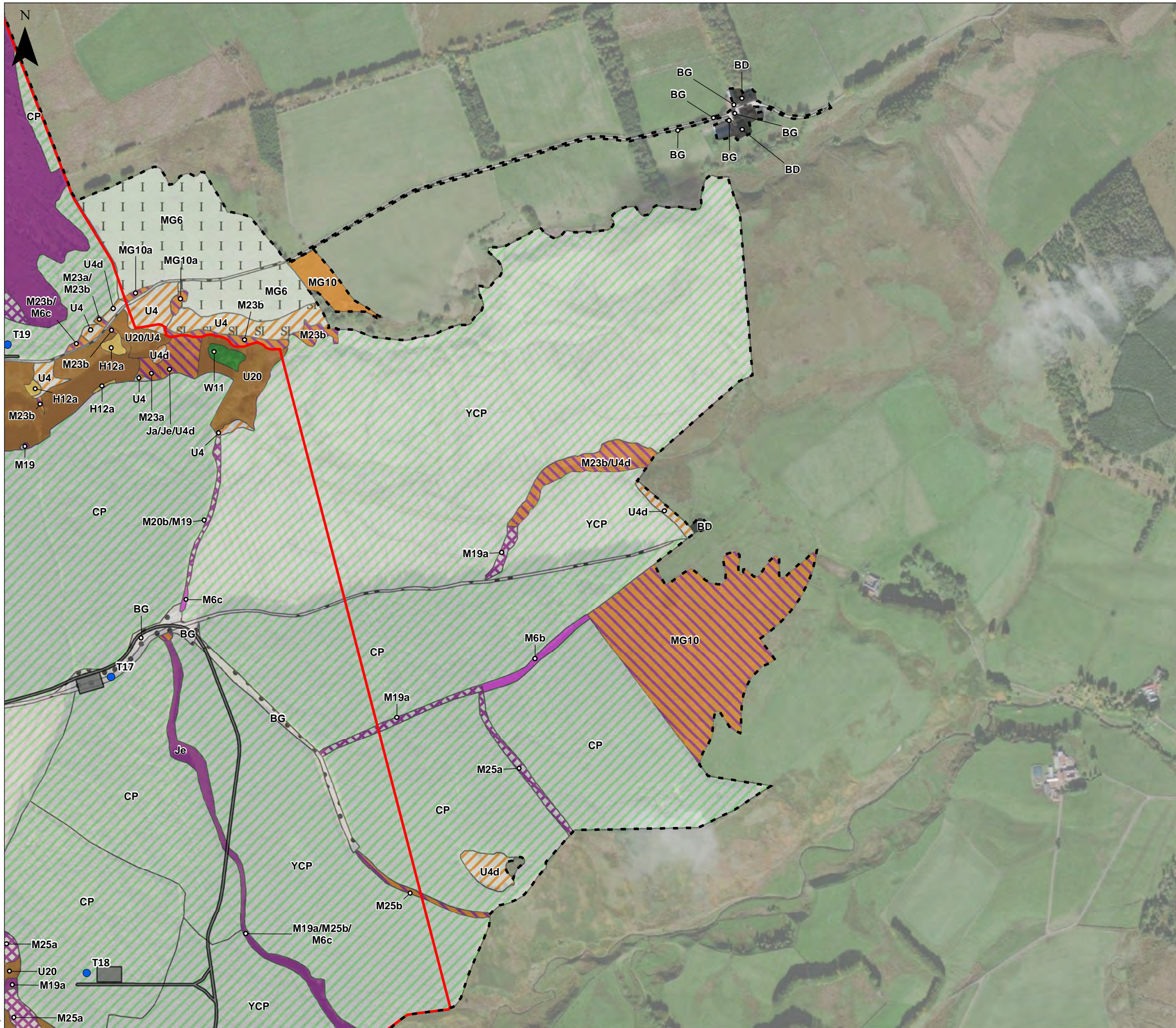
**Figure 7.3a**  
**National Vegetation Classification (NVC)**  
**Study Area and Survey Results**

Date: 22/10/2020 Drawn by: LNF Checked by: RD Version: Rev0

Project Number: 2694

Contains Ordnance Survey data © Crown copyright and database right 2020. Source: Esri, Maxar, GeoEye, Earthstar Geographics, CNES/Airbus DS, USDA, USGS, AeroGRID, IGN, and the GIS User Community



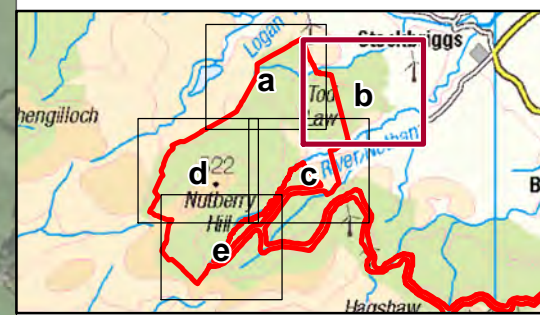


**KEY**

- Site Boundary
- Turbine
- Infrastructure
- Study Area

**Phase 1 Description (Code)**

- Broad-Leaved Semi-Natural Woodland (A1.1.1)
- Coniferous Plantation Woodland (A1.2.2)
- Unimproved Acid Grassland (B1.1)
- Semi-Improved Acid Grassland (B1.2)
- Unimproved Neutral Grassland (B2.1)
- Improved Grassland (B4)
- Marsh/Marshy Grassland (B5)
- Continuous Bracken (C1.1)
- Acid Dry Dwarf Shrub Heath (D1.1)
- Blanket Bog (E1.6.1)
- Wet Modified Bog (E1.7)
- Acid Neutral Flush (E2.1)
- Building (J3.6)
- Bare Ground (J4)



0 100 200 300 Metres  
 Scale 1:7,500 @ A3



Cumberhead West Wind Farm  
 Environmental Impact Assessment Report

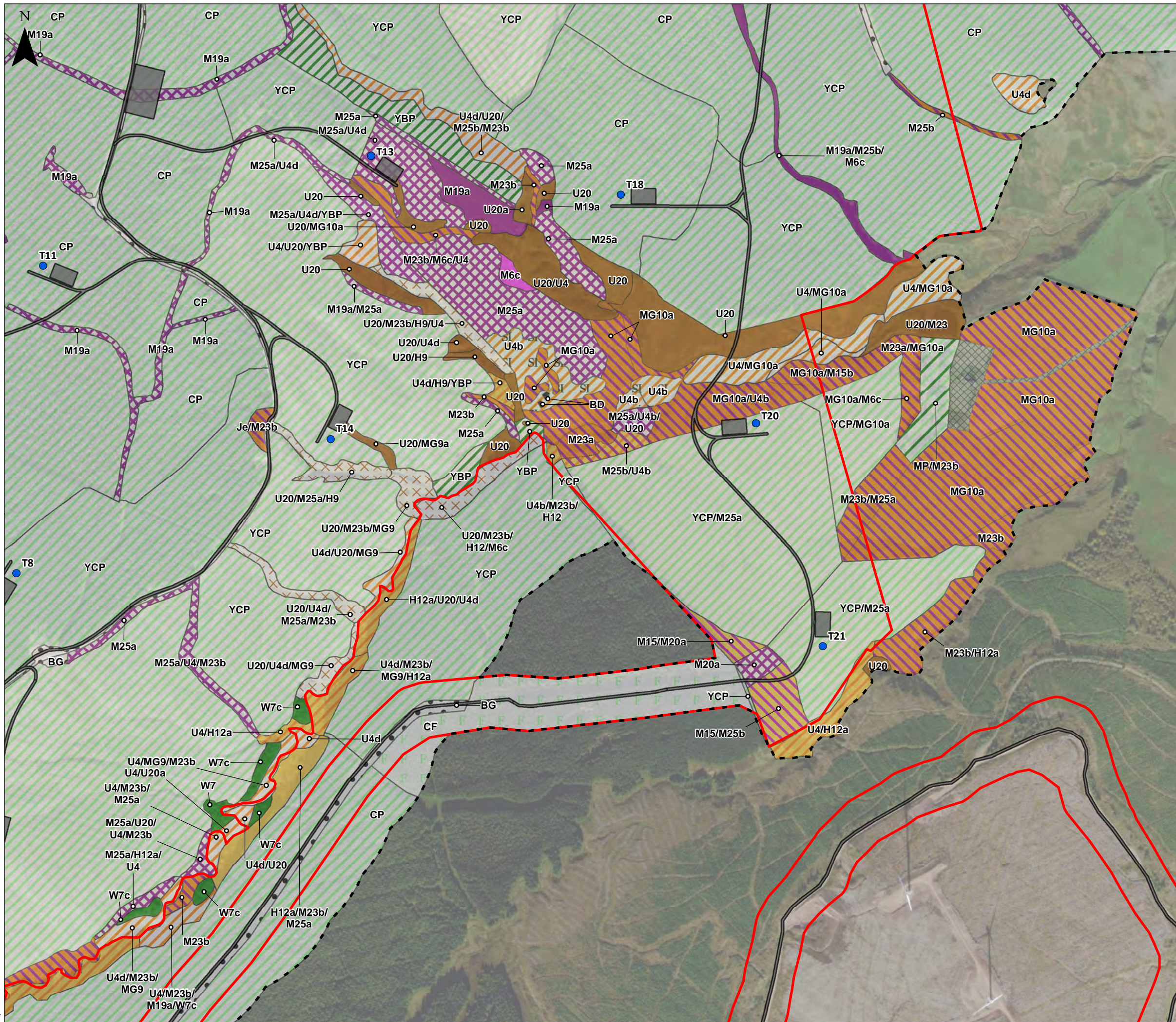
**Figure 7.3b**  
**National Vegetation Classification (NVC)**  
**Study Area and Survey Results**

Date: 22/10/2020 Drawn by: LNF Checked by: RD Version: Rev0

Project Number: 2894

Contains Ordnance Survey data © Crown copyright and database right 2020. Source: Esri, Maxar, GeoEye, Earthstar Geographics, CNES/Airbus DS, USDA, USGS, AeroGRID, IGN, and the GIS User Community



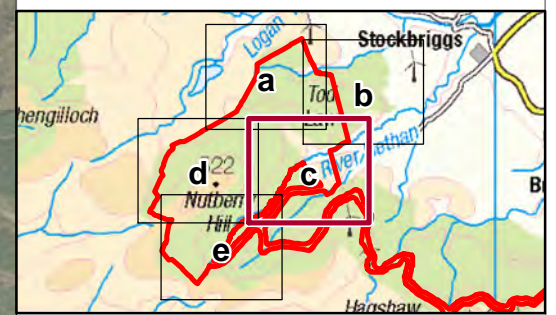


**KEY**

- Site Boundary
- Turbine
- Infrastructure
- Study Area

**Phase 1 Description (Code)**

- Broad-Leaved Semi-Natural Woodland (A1.1.1)
- Broad-Leaved Plantation Woodland (A1.1.2)
- Coniferous Plantation Woodland (A1.2.2)
- Mixed Plantation Woodland (A1.3.2)
- Recently Felled Coniferous Woodland (A4.2)
- Unimproved Acid Grassland (B1.1)
- Semi-Improved Acid Grassland (B1.2)
- Marsh/Marshy Grassland (B5)
- Continuous Bracken (C1.1)
- Scattered Bracken (C1.2)
- Acid Dry Dwarf Shrub Heath (D1.1)
- Wet Dwarf Shrub Heath (D2)
- Dry Heath/Acid Grassland Mosaic (D5)
- Wet Heath/Acid Grassland Mosaic (D6)
- Blanket Bog (E1.6.1)
- Wet Modified Bog (E1.7)
- Acid Neutral Flush (E2.1)
- Building (J3.6)
- Bare Ground (J4)
- No Surveyor Access (NSA)



Scale 1:7,500 @ A3



Cumberhead West Wind Farm  
Environmental Impact Assessment Report

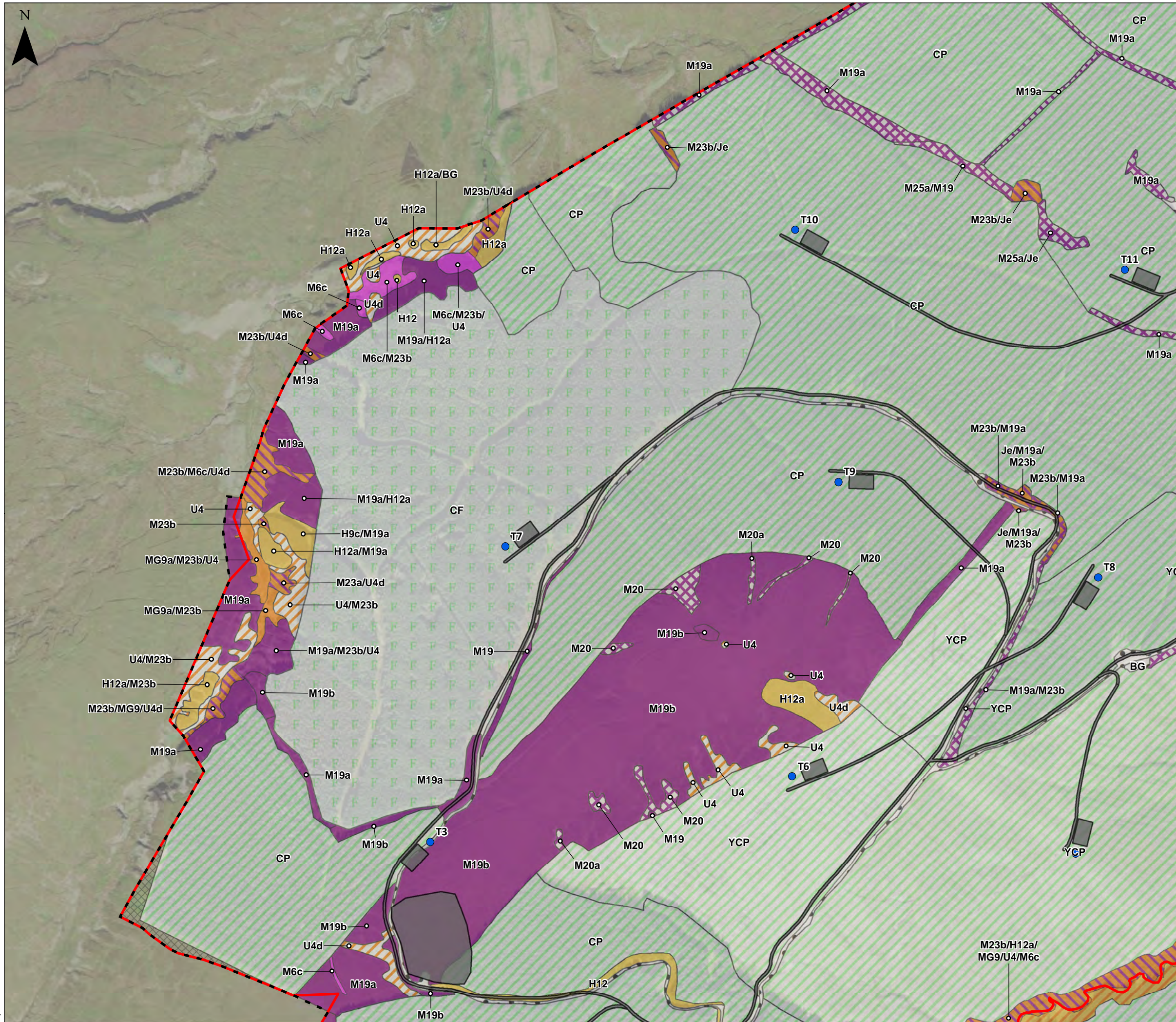
**Figure 7.3c**  
**National Vegetation Classification (NVC)**  
**Study Area and Survey Results**

|                  |               |                |               |
|------------------|---------------|----------------|---------------|
| Date: 22/10/2020 | Drawn by: LNF | Checked by: RD | Version: Rev0 |
|------------------|---------------|----------------|---------------|

Project Number: 2694

Contains Ordnance Survey data © Crown copyright and database right 2020. Source: Esri, Maxar, GeoEye, Earthstar Geographics, CNES/Airbus DS, USDA, USGS, AeroGRID, IGN, and the GIS User Community



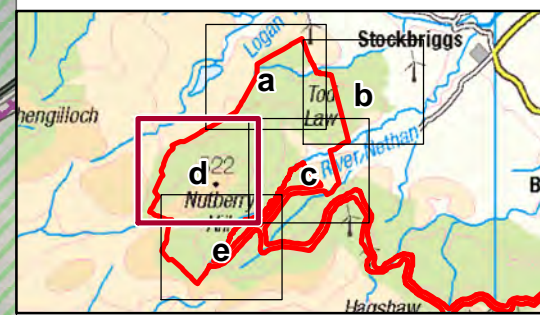


**KEY**

- Site Boundary
- Turbine
- Infrastructure
- Study Area

**Phase 1 Description (Code)**

- Coniferous Plantation Woodland (A1.2.2)
- Recently Felled Coniferous Woodland (A4.2)
- Unimproved Acid Grassland (B1.1)
- Unimproved Neutral Grassland (B2.1)
- Marsh/Marshy Grassland (B5)
- Marsh/Marshy Grassland/ Wet Modified Bog Mosaic (B5/E1.7)
- Acid Dry Dwarf Shrub Heath (D1.1)
- Dry Heath/Acid Grassland Mosaic (D5)
- Blanket Bog (E1.6.1)
- Wet Modified Bog (E1.7)
- Acid Neutral Flush (E2.1)
- Bare Ground (J4)
- No Surveyor Access (NSA)



Scale 1:7,500 @ A3



Cumberhead West Wind Farm  
Environmental Impact Assessment Report

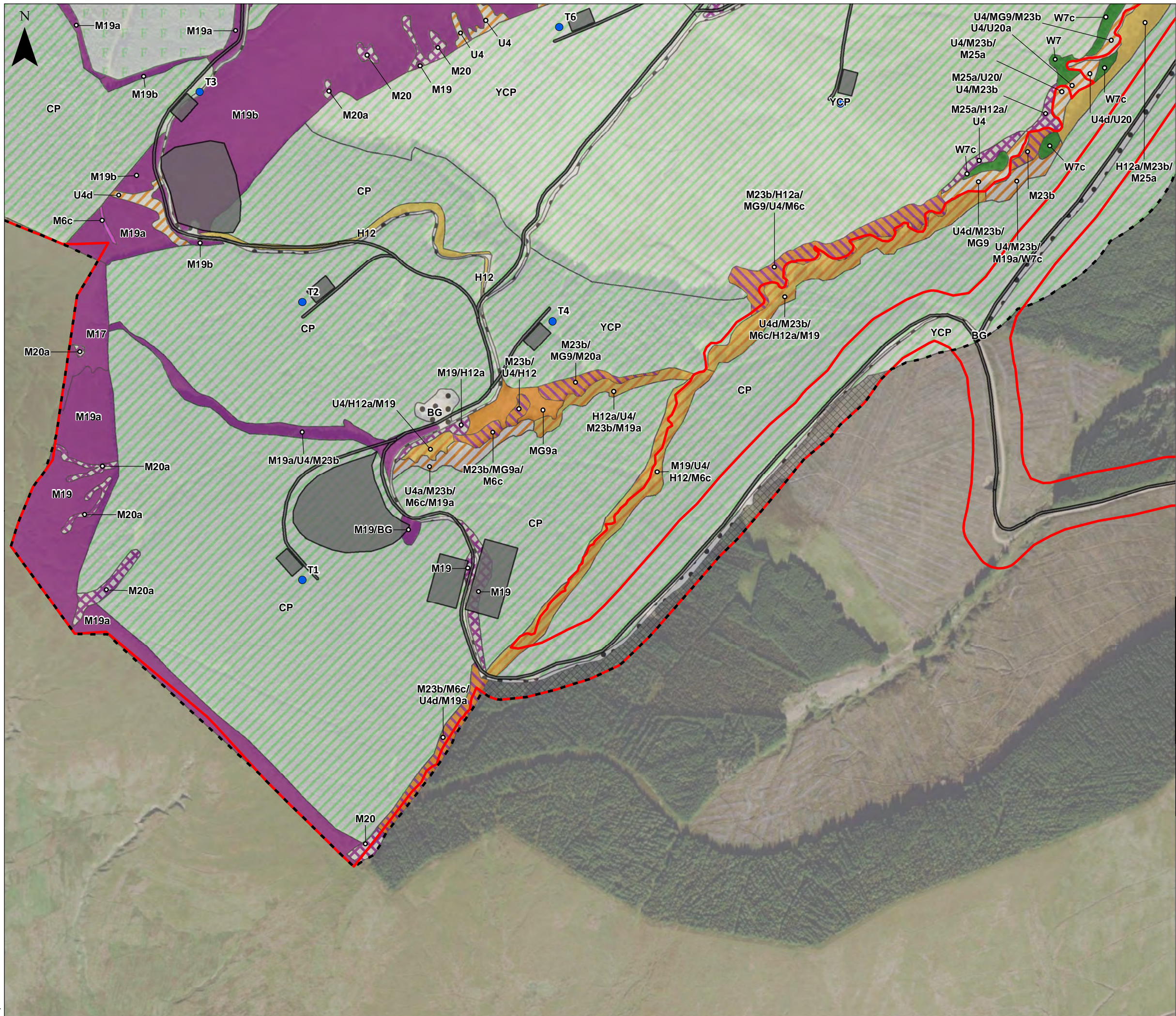
**Figure 7.3d**  
**National Vegetation Classification (NVC)**  
**Study Area and Survey Results**

|                  |               |                |               |
|------------------|---------------|----------------|---------------|
| Date: 22/10/2020 | Drawn by: LNF | Checked by: RD | Version: Rev0 |
|------------------|---------------|----------------|---------------|

Project Number: 2694

Contains Ordnance Survey data © Crown copyright and database right 2020. Source: Esri, Maxar, GeoEye, Earthstar Geographics, CNES/Airbus DS, USDA, USGS, AeroGRID, IGN, and the GIS User Community



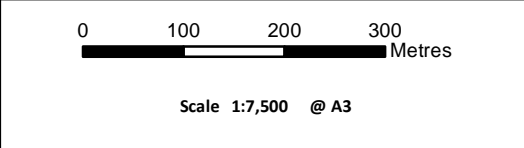
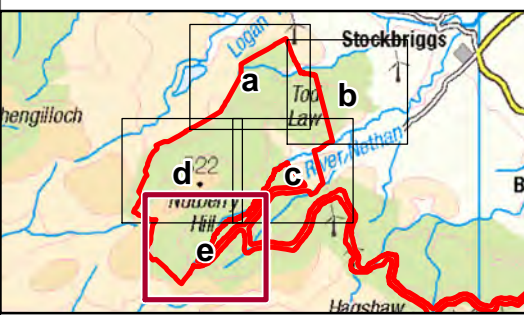


**KEY**

- Site Boundary
- Turbine
- Infrastructure
- Study Area

**Phase 1 Description (Code)**

- Broad-Leaved Semi-Natural Woodland (A1.1.1)
- Coniferous Plantation Woodland (A1.2.2)
- Recently Felled Coniferous Woodland (A4.2)
- Unimproved Acid Grassland (B1.1)
- Unimproved Neutral Grassland (B2.1)
- Marsh/Marshy Grassland (B5)
- Acid Dry Dwarf Shrub Heath (D1.1)
- Dry Heath/Acid Grassland Mosaic (D5)
- Blanket Bog (E1.6.1)
- Wet Modified Bog (E1.7)
- Acid Neutral Flush (E2.1)
- Bare Ground (J4)
- No Surveyor Access (NSA)



Cumberhead West Wind Farm  
Environmental Impact Assessment Report

**Figure 7.3e**  
**National Vegetation Classification (NVC)**  
**Study Area and Survey Results**

|       |            |           |     |             |    |          |      |
|-------|------------|-----------|-----|-------------|----|----------|------|
| Date: | 22/10/2020 | Drawn by: | LNF | Checked by: | RD | Version: | Rev0 |
|-------|------------|-----------|-----|-------------|----|----------|------|

Project Number: 2694

Contains Ordnance Survey data © Crown copyright and database right 2020. Source: Esri, Maxar, GeoEye, Earthstar Geographics, CNES/Airbus DS, USDA, USGS, AeroGRID, IGN, and the GIS User Community